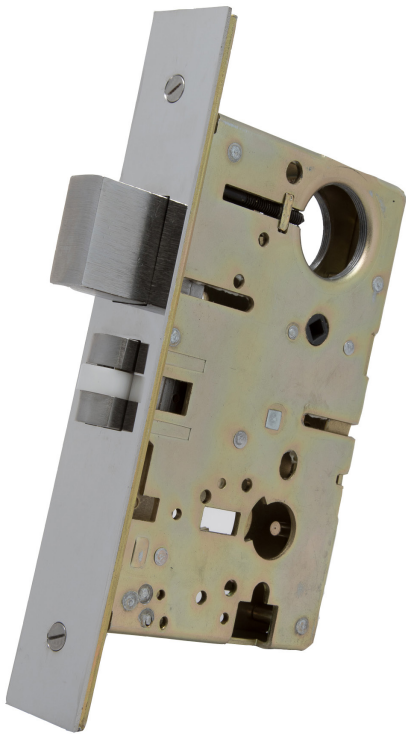




9100 Roller Latch

Mortise Lock



STANDARD BACKSETS

2-1/2" , 2-3/4"

CASE : Heavy Gauge, Plated Steel (15/16" thick)

ARMOR FRONT : Wrought brass, bronze or stainless steel.

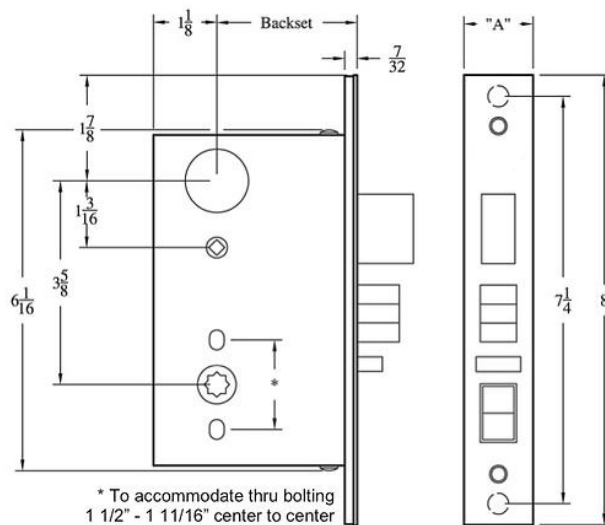
ROLLER LATCH BOLT : Brass. anti-friction type, 3/4" throw

DEADBOLT : Brass with a hardened steel insert, 1" throw

STRIKE : 4 7/8" ASA

HUBS : N/A

DUST BOX: Brass. stainless steel or US10B available upon request



"A" 9100 SERIES—1 1/4"
9000 SERIES—1"