



9000-9100 Series

Mortise Lock



AVAILABLE KNOBxKNOB, LEVERxLEVER (KxL,LxK)

- UL Listed 3 Hour (R13846)
- Grade 1 certified to ANSI/BHMA A156.13.2005 standard; exceeding 5 million cycles at independent third part test facility
- Anti-friction latch and security deadbolt with hardened steel inserts
- Available with rabbeted fronts and strikes
- Available for upside down, European style installation
- Custom backsets also available
- Fronts and strikes available in any standard/custom finish

STANDARD BACKSETS

2-1/2" , 2-3/4" , 3-3/4" , 5" , 6"

CASE : Heavy Gauge, Plated Steel (15/16" thick)

ARMOR FRONT : Wrought brass, bronze or stainless steel. Adjustable bevel.

LATCH BOLT : Brass. anti-friction type, 3/4" throw

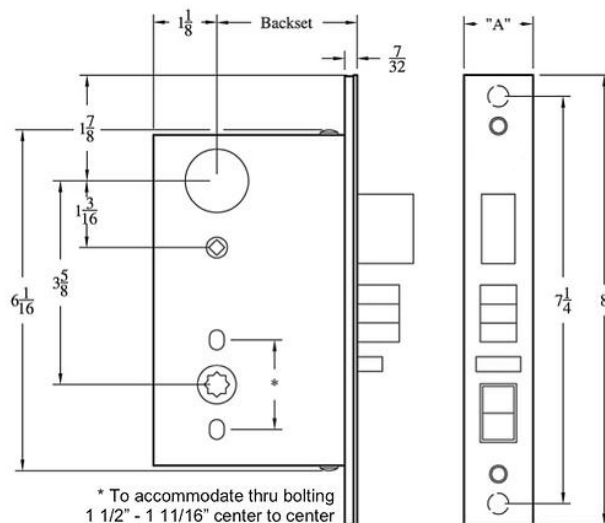
DEADBOLT : Brass with a hardened steel insert, 1" throw

STRIKE : 4 7/8" ASA

HUBS : Available in different sizes to be compatible with various trims

THUMB TURN HUB : 3/16" (5mm) on the diamond

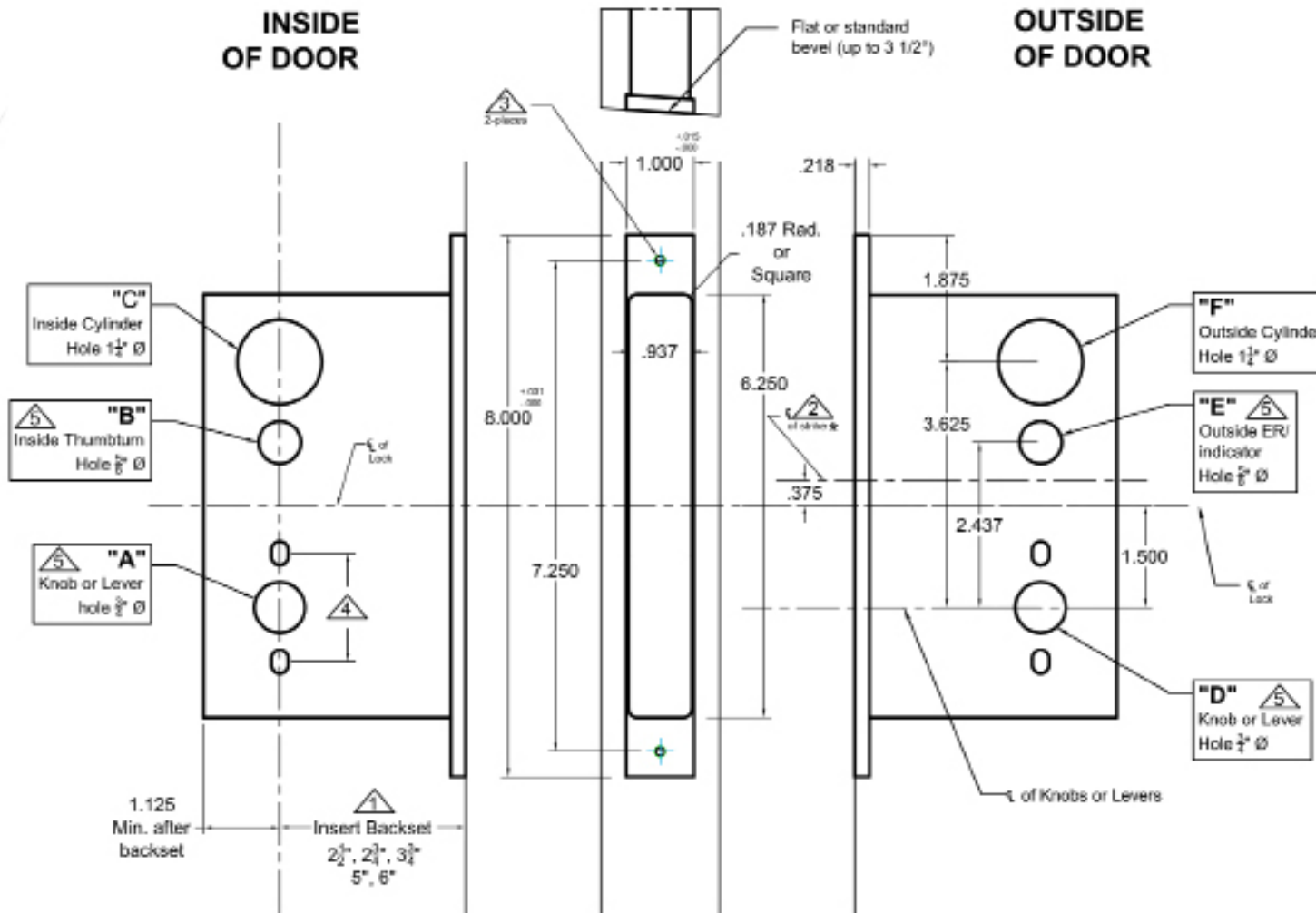
DUST BOX: Brass. stainless steel or US10B available upon request



"A" 9100 SERIES—1 1/4"
9000 SERIES—1"

Mortise Lock Template - 9000 Series

LEVER x LEVER / KNOB x KNOB



Lock Functions	Inside of door		Outside of door	
	A* Knob/lever = 3/4" dia.	B* thumbturn = 1/2" dia.	C* cylinder = 1 1/2" dia.	D* Knob/lever = 3/4" dia.
9000ADL	●	●	●	●
9001	●	●	●	●
9002	●	●	●	●
9003	●	●	●	●
9022	●	●	●	●
9024	●	●	●	●
9024RL	●	●	●	●
9025	●	●	●	●
9025RL	●	●	●	●
9034	●	●	●	●
9039	●	●	○	●
9042	●	●	●	●
9043	●	●	●	●
9043E	●	●	●	●
9044	●	●	●	●
9044E	●	●	●	●
9045	●	●	●	●
9045S	●	●	●	●
9046	●	●	●	●
9048	●	●	●	●
9049	●	●	●	●
9053	●	●	●	●
9049	●	●	●	●
9056	●	●	●	●
9058	○	●	●	●
9059	○	●	●	●
9060	○	●	●	●
9067	●	●	●	●
9069	●	●	●	●
9058EL	●	●	●	●
9058EU	●	●	●	●
9059EL	●	●	●	●
9059EU	●	●	●	●

● Required Holes
○ Optional Holes

Notes:

- ▲ Insert backset here $2\frac{1}{2}$ ", $2\frac{3}{4}$ ", $3\frac{1}{2}$ ", 5", or 6"
 - ▲ ASA strike details on template # T-ALH.ASA.STK (*use template #T-ALH.ASADB.STK for its 9001,9002 and 9003)
 - ▲ Prep for #12 wood or 12-24 machine screws
 - ▲ Thru bolting holes **ONLY** if required. See trim manufacturers standard template for details.
- Accurate lock's accommodates $1\frac{1}{2}$ " to $1\frac{11}{16}$ " center to centers and up to $\frac{1}{2}$ " dia. post.
If there are any additional questions about the thru-bolting, please contact our office.
- ▲ Knob, thumbturn and ER holes may vary from different trim manufacturers. Please refer to their templates to confirm these dimensions.

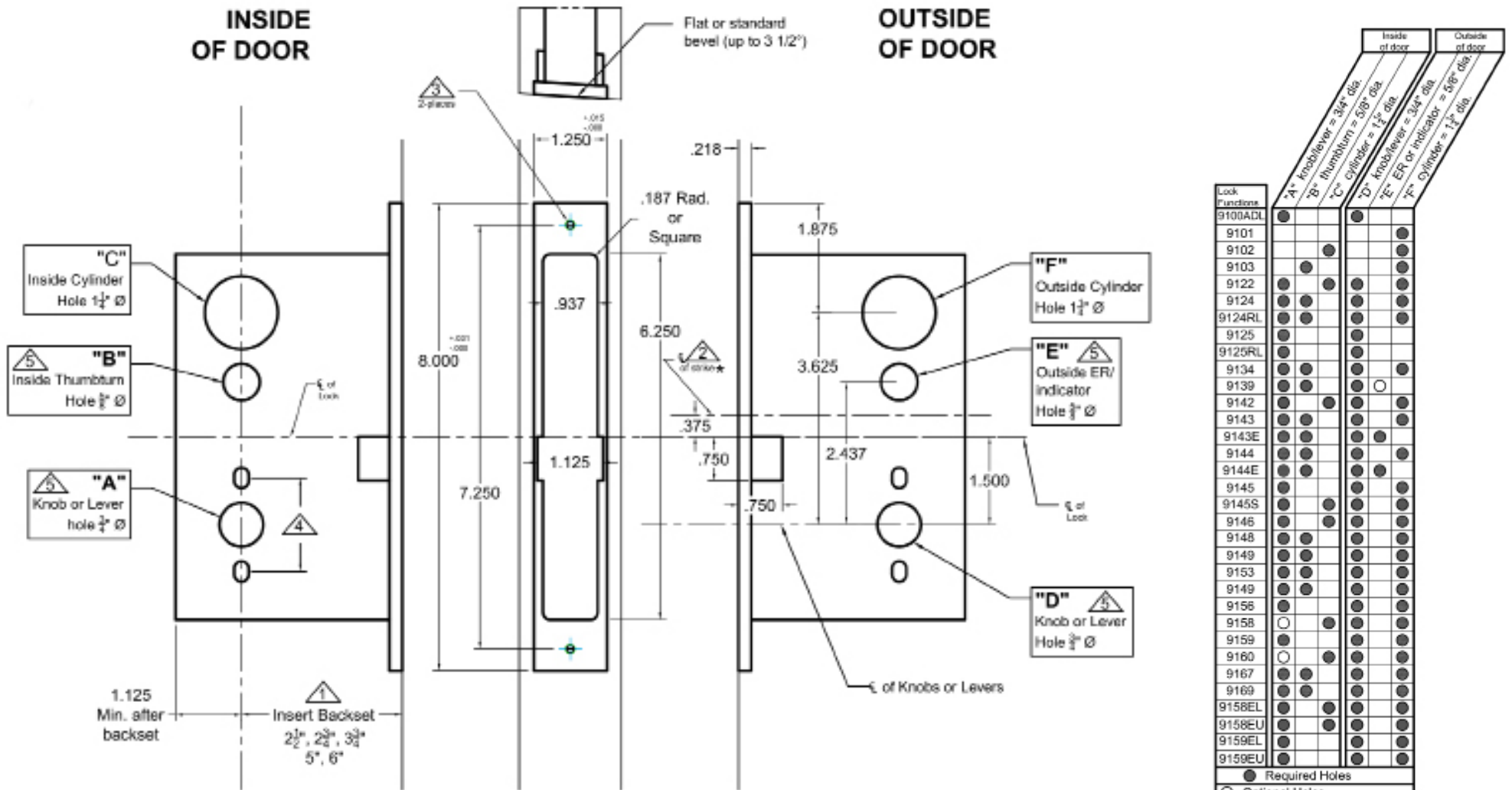
Additional Notes:

- a) **Responsibility:** Door and frame manufacturers are responsible for providing adequate construction or re-inforcement for proper installation of hardware shown.
- b) Please contact us if a double lip strike is needed - for a proper template
- c) See catalog / spec sheets for additional lock details



Mortise Lock Template - 9100 Series

LEVER x LEVER / KNOB x KNOB



Notes:

- ▲ Insert backset here 2 1/2", 2 3/4", 3 1/4", 5", or 6"
 - ▲ ASA strike details on template # T-ALH.ASA.STK (*use template #T-ALH.ASADB.STK for #s 9101,9102 and 9103)
 - ▲ Prep for #12 wood or 12-24 machine screws
 - ▲ Thru bolting holes **ONLY** if required. See trim manufacturers standard template for details.
- Accurate lock's accommodates 1 1/4" to 1 1/2" center to centers and up to 1 1/4" dia. post.
 If there are any additional questions about the thru-bolting, please contact our office.
- ▲ Knob, thumbturn and ER holes may vary from different trim manufacturers. Please refer to their templates to confirm these dimensions.

Additional Notes:

- a) **Responsibility:** Door and frame manufacturers are responsible for providing adequate construction or re-inforcement for proper installation of hardware shown.
- b) Please contact us if a double lip strike is needed - for a proper template
- c) See catalog / spec sheets for additional lock details

