



# 8700-8800 Series

## Mortise Lock



AVAILABLE KNOBxKNOB, LEVERxLEVER (KxL, LxK)

- Ideal for narrow stile doors
- Featuring Emergency Egress
- Available with rabbeted fronts and strikes
- Available for upside down, European style installation
- Custom backsets also available
- Fronts and strikes available in any standard/custom finish

### STANDARD BACKSETS

1-1/2" , 1-3/4" , 2" , 2-1/4"

**CASE :** Heavy Gauge, Plated Steel (15/16" thick)

**ARMOR FRONT :** Wrought brass, bronze or stainless steel. Adjustable bevel.

**LATCH BOLT :** Brass. Solid type. 1/2" throw

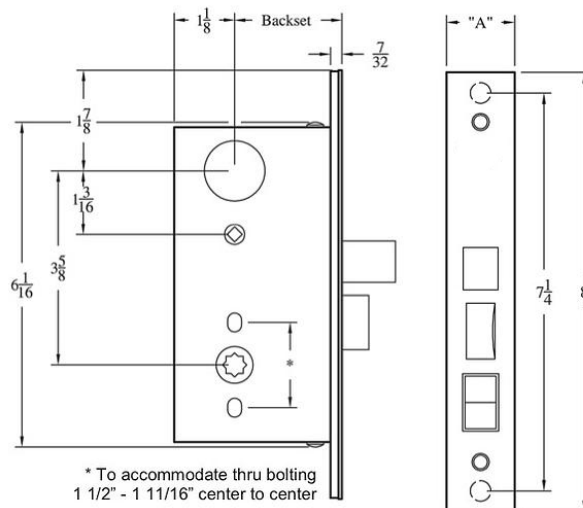
**DEADBOLT :** Brass. 1" throw

**STRIKE :** 4 7/8" ASA

**HUBS :** Available in different sizes to be compatible with various trims

**THUMB TURN HUB :** 3/16" (5mm) on the diamond

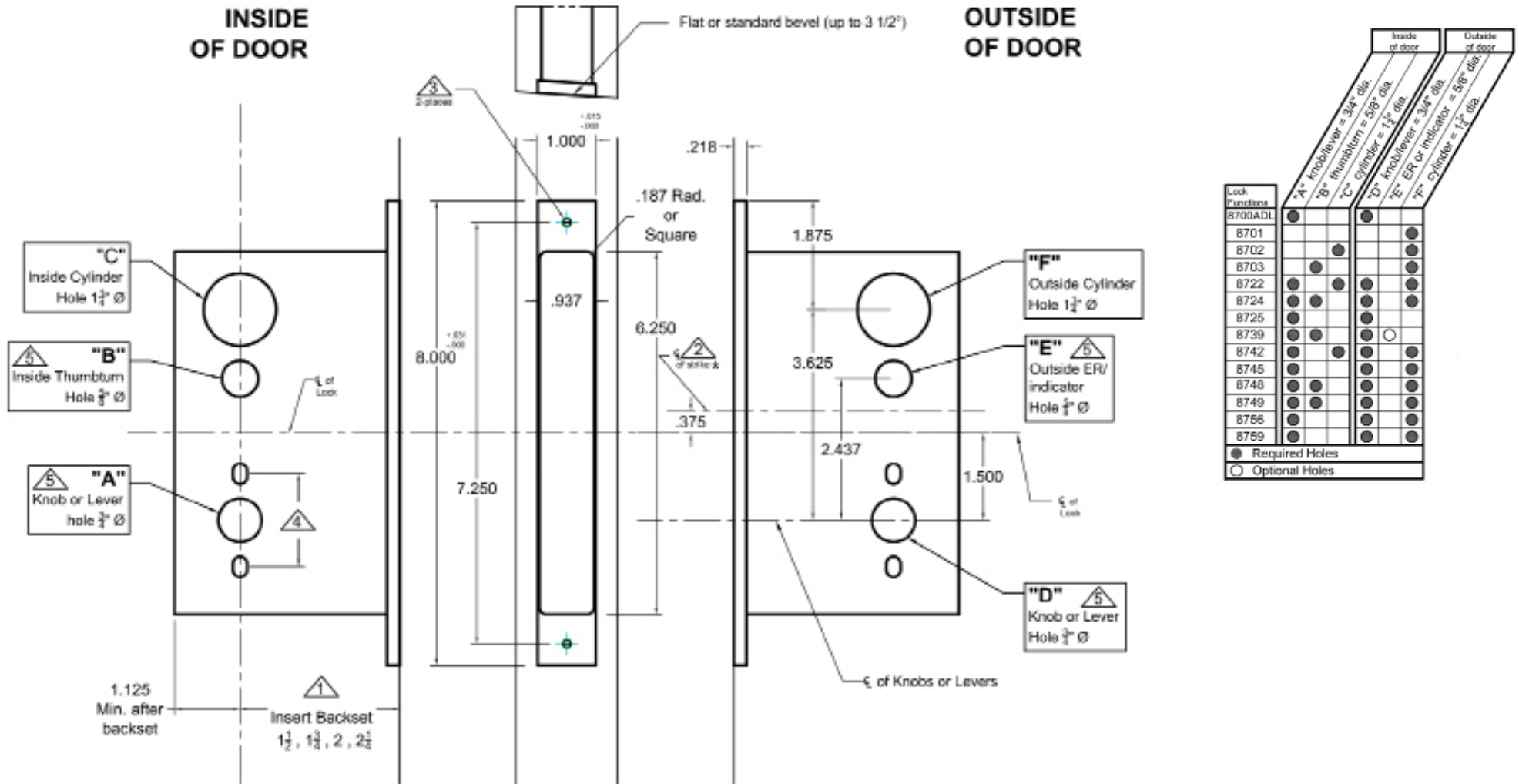
**DUST BOX:** Brass. stainless steel or US10B available upon request



"A" 8800 SERIES—1 1/4"  
8700 SERIES—1"

# Mortise Lock Template - 8700 Series

LEVER x LEVER / KNOB x KNOB



**Notes:**

- ▲ Insert backset here  $1\frac{1}{2}"$ ,  $1\frac{3}{4}"$ ,  $2"$ ,  $2\frac{1}{4}"$
  - ▲ ASA strike details on template # T-ALH.ASA.STK (\*use template #T-ALH.ASADB.STK for f/s 8701,8702 and 8703)
  - ▲ Prep for #12 wood or 12-24 machine screws
  - ▲ Thru bolting holes **ONLY** if required. See trim manufacturers standard template for details.
- Accurate lock's accommodates  $1\frac{1}{2}"$  to  $1\frac{13}{16}"$  center to centers and up to  $\frac{1}{2}"$  dia. post.  
If there are any additional questions about the thru-bolting, please contact our office.
- ▲ Knob, thumbturn and ER holes may vary from different trim manufacturers. Please refer to their templates to confirm these dimensions.

**Additional Notes:**

- a) **Responsibility:** Door and frame manufacturers are responsible for providing adequate construction or re-inforcement for proper installation of hardware shown.
- b) Please contact us if a double lip strike is needed - for a proper template
- c) See catalog / spec sheets for additional lock details



