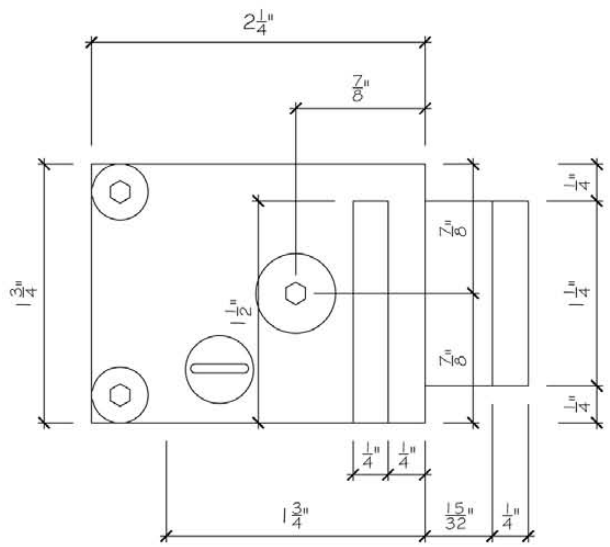


1 side view modified harmon hinge
 scale: full w/ 1/4" inset plate to be concealed

for 1.75" thick door
 modified (mounting plate set
 back .25" to be concealed by
 millwork)



2 end view modified harmon hinge
 scale: full w/ 1/4" inset plate to be concealed

*Harmon Hinge 1.75" Door Thickness
 with custom concealed jamb mounts*